

Exatec

Exatec blanco

ROOT POST SYSTEM

Exatec is designed for teeth with high coronal damage.



Overview of your advantages:

High bending strength

HT-Glassfiber: 1.678 MPa

Determined accordingly to EN ISO 178

High fatigue and fracture resistance

Homogeneity due to dentin-like elasticity

Safe adhesion due to micro-retentive surface

Effectively and sharply cutting burs

High radiopacity

Scientifically and practically proved since 1995

For further information please see our brochure or visit our website www.hahnenkratt.com.



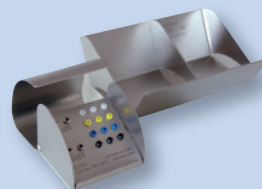
Bionics offers indications for the technical way of designing biological systems.
Even the fibre reinforced composite technique originates from biological structures.



REF 42 600



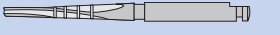
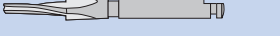
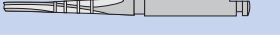




REF 42 610



REF 10 003 + REF 10 000 (empty)

The Standard Sets and Test Sets are shipped in a SHIPPING BOX.
 Posts and Drills each in blister packs.
 Please see the price list for the contents.

Exatec Root Post System		Post head-Ø apik. length apic. Ø apic. Ø mm	universal	2,6	2,7	2,8	2,2
				6,6	8,0	9,7	-
				1,461 0,98 mm	1,559 0,98 mm	1,681 0,98 mm	- 0,98 mm
Code		-	white	yellow	blue	green	
package of		REF					
	Preshaping Drill with guiding tip	1	42 010				
	Preshaping Drill with cutting tip	1	43 000				
	Pilot Drill with partial cutting tip	1	42 100				
	Calibration Drill	1		42 001	42 002	42 003	
	Calibration Drill	1					42 005
Exatec blanco HT-Glassfiber	Standard Set	Assortment	42 600				
	Test Set	Assortment	42 610				
	HT-Glassfiber	10		42 611	42 612	42 613	
	HT-Glassfiber	10					42 615
System Box + Organizer, empty		1+1	10 003 + 10 000				