

Contec

ROOT POST SYSTEM

Contec is designed for roots with rather conical shape. The shape is designed with two different tapers and follows the natural shape of the root canal.

Overview of your advantages:

High bending strength

HT-Glassfiber: 1.678 MPa

Determined accordingly to EN ISO 178

High fatigue and fracture resistance

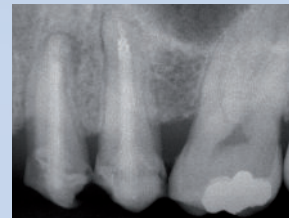
Homogeneity due to dentin-like elasticity

Safe adhesion due to micro-retentive surface

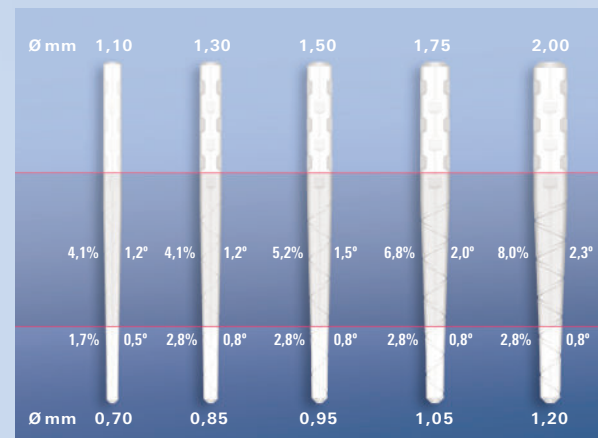
Effectively and sharply cutting burs

High radiopacity

Scientifically and practically proved since 1995



For further information
please see our brochure
or visit our website
www.hahnenkratt.com.





REF 44 600







REF 44 610



REF 10 002 (empty)

The Standard Sets and Test Sets are shipped in a SHIPPING BOX.
 Posts and Drills each in blister packs.
 Please see the price list for the contents.

Contec Root Post System			universal	1,1 mm	1,3 mm	1,5 mm	1,75 mm	2,0 mm
		Code	–	red	white	yellow	blue	black
		package of	REF					
	Preshaping Drill with guiding tip	1	42 010					
	Preshaping Drill with cutting tip	1	43 000					
	Calibration Drill	1		44 00 D11	44 001	44 002	44 003	44 004
Contec HT-Glasfiber		Standard Set	Assortment	44 600				
		Test Kit	Assortment	44 610				
	HT-Glasfiber	10		44 60 D11	44 601	44 602	44 603	44 604
System Box, empty		1	10 002					